



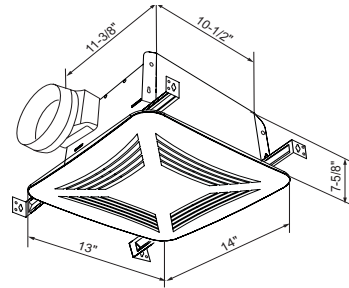
# MODEL PC

## CEILING MOUNT BATHROOM FAN



### Features & Construction

- Extremely quiet operation 0.5 to 1.1 Sones
- 50-150 CFM
- Motors operate with the lowest heat build up for long life even when run continuously - 5 year warranty
- PC50X features 4" duct connectors
- PC80X & 110X feature both 4 and 6" duct connectors
- PC150 features 6" duct connectors
- Built-in backdraft damper
- Robust steel housing
- Internal electrical wiring box
- Attractive, sturdy grille
- Thermally protected motor
- ETL Listed
- HVI Certified
- AMCA Air and Sound Certified
- PC50X, PC80X, 110X & 150 are ENERGY STAR® qualified



Intertek



### HVI Certified Performance

Model	Duct Size	CFM	Static Pressure (in W.G.)	Energy Efficiency (CFM/Watts)*	Watts	Power (V/Hz)	Sones *	Amps
PC50X	4"	50/38	0.1/0.25	3.5	16.1	120/60	0.9	.17
PC80X	4"	80/61	0.1/0.25	3.5	24.3	120/60	1	.27
	6"	90/64		3.7	24.4		0.5	
PC110X	4"	110/91	0.1/0.25	4.3	27.3	120/60	0.9	.30
	6"	130/109		4.7	27.6			
PC150	6"	150/131	0.1/0.25	3.6	43.2	120/60	1.1	.34



\* Energy Star qualified data based on tested air flow and power consumption.

### AMCA Certified Performance

Model	Duct Size	Static Pressure	CFM	Sones *	RPM
PC80X	4"	0	102	1.3	800
	4"	0.1	86	1.6	800
	4"	0.25	59	2.4	800
	6"	0	119	1.0	800
	6"	0.1	89	1.3	800
	6"	0.25	66	2.4	800
PC110X	4"	0	114	1.5	850
	4"	0.1	100	1.7	850
	4"	0.25	76	2.3	850
	6"	0	134	1.4	850
	6"	0.1	112	1.5	850
	6"	0.25	86	2.0	850
PC150	6"	0	159	2.3	1000
	6"	0.1	140	2.2	1000
	6"	0.25	117	2.5	1000

### Dimensions

Model	Duct Dia.	Grille Size (Sq. in)	Cabinet Size (in Inches)			Unit Wgt. (lbs)	ENERGY STAR
			W	D	H		
PC50X	4"	10-1/4 x 10-1/2	9	9	5-3/4	7	No
PC80X	4 & 6"	13 x 14	11-3/8	10-1/2	7-5/8	11	Yes
PC110X	4 & 6"	13 x 14	11-3/8	10-1/2	7-5/8	11	Yes
PC150	6"	13 x 14	11-3/8	10-1/2	7-5/8	11	Yes

The performance ratings include the effects of inlet grille and backdraft damper in the airstream. Speed (RPM) shown is nominal. Performance is based on actual speed of test. The sound ratings are loudness values in fan sones at 5' (1.5m) in a hemispherical free field calculated per AMCA Std. 301. Values shown are for Installation Type B: Free inlet fan sone levels. Air performance shown is for Installation Type B: Free inlet, Ducted outlet.

\*The difference between some values certified by HVI for residential use and by AMCA for commercial/industrial use is mainly due to the ANSI S3.4 procedures used to convert measured sound to perceived sound, and because HVI and AMCA have different rules for rounding some values. ANSI S3.4 specifies a procedure for calculating loudness as perceived by a typical listener under specific conditions. HVI establishes values in a spherical free field at a distance of 5 feet from the fan. AMCA establishes values in a hemispherical free field at a distance of 5 feet from the fan. It is not possible to achieve an exact comparison of HVI and AMCA sone values.



S&P USA Ventilation Systems, LLC., Div. of Soler & Palau Ventilation Group, certifies that the Models PC shown herein are licensed to bear the AMCA Seal. The ratings shown are based on test and procedures performed in accordance with AMCA Publication 211 and AMCA Publication 311 and comply with the requirement of the AMCA Certified Ratings Program.

## PC Options Overview

The simplicity of S&P's Premium CHOICE Series comes in the options. While other premium bath fans come as lighted fans, speed control, motion sensor or humidity sensor built in, our Premium Choice bath fans give you the flexibility to choose your grille and control separately. Our fans even allow you to change your mind after you install them!

Use the chart below to determine the options available with each Premium Choice Fan:

Option	Premium Choice Fan			
	PC50	PC80X	PC110X	PC150
	<b>With Standard Grille</b>			
Intermittent High Speed	✓	✓	✓	✓
Continuous 62.2 Speed Only	✓	✓	✓	✓
Continuous 62.2 Speed, Intermittent High Speed	✓	✓	✓	✓
Intermittent Reduced Speed	✓	✓	✓	✓
Humidity Sensing Only	✓	✓	✓	✓
Humidity Sensing and Intermittent High Speed	✓	✓	✓	✓
Contractor Pack		✓	✓	
	<b>With Optional Lighted (CFL or LED) Grille Kit</b>			
Intermittent High Speed		✓	✓	✓
Continuous 62.2 Speed Only		✓	✓	✓
Continuous 62.2 Speed, Intermittent High Speed		✓	✓	✓
Intermittent Reduced Speed		✓	✓	✓
Humidity Sensing Only		✓	✓	✓
Humidity Sensing and Intermittent High Speed		✓	✓	✓

## PCLK - Premium CHOICE Series Light Kits

### Grille Light Kits

S&P offers Premium Choice Series Light Kits with CFL bulbs or LED lights so you can choose a fan with lights now or later. These kits fit the PC80X, 110X, 150 and PCD110H. The CFL lighted grilles (PCLK) come standard with a 13 watt GU24 fluorescent bulb and a 4 watt night light. The LED lighted grilles (PCLEDK) come standard with an 11 Watt LED light and a 2 Watt LED night light setting.



## PCMK - Premium CHOICE Series Motion Kits

### Motion Sensing Grille Kits

S&P offers Premium Choice Series Motion Sensing Kits so you can have worry free bathroom ventilation. This kit fits the PC80X, 110X & 150. The motion sensing grille includes a motion sensor, a speed control and a LED night light.

**Note:** For PC50X lighted grille and radiation damper kit options, see Pg. 32.

## PCLMK - Premium CHOICE Series Motion Kits

### Motion Sensing Lighted Grille Kits

S&P offers a Premium Choice Series Motion Sensing Lighted Grille Kit. The PCLMK comes standard with a motion sensor, a 13 watt GU24 fluorescent bulb and a 4 watt night light. This kit fits the PC80X, 110X & 150.



## PC CONTROLS

### Humidity Sensor (PCHS)

Using a PC fan with S&P's humidity sensing control is a worry free solution to fighting excess humidity and possible mold problems. The sensor easily mounts inside the fan housing utilizing 2 pre-drilled holes and a standard receptacle. With the sensor at ceiling level it detects rapid increases in moisture where steam and humidity naturally rise, and automatically turns on the fan. The humidity sensor features an automatic shut off to save worry and money. The humidity sensor is the perfect solution to "fit & forget" the bath fan, especially in high traffic bathrooms, kids' bathrooms, or households on-the-go that must leave the house without properly venting humidity. S&P's PC fan with optional Humidity Sensor helps prevent cosmetic and possible mold issues associated with excess moisture.

- Detects rapid rise in humidity
- Simple plug into receptacle in fan housing
- Auto-shut off timer
- Accessible sensitivity adjustment
- Humidity is sensed at the ceiling
- Can be installed with new fan or as an add-on later if needed



### Speed Control (PCSC)

Using a PC fan with S&P's speed control is simple solution to for intermittent and continuous ventilation. The sensor easily mounts inside the fan housing utilizing 2 pre-drilled holes and a standard receptacle.

- Simple plug into receptacle in fan housing
- Accessible speed adjustment
- Can be installed with new fan or as an add-on later if needed
- Allows for adjustable continuous speed for ASHRAE 62.2
- High speed override



### Indoor Air Quality Control (PCIAQS)

S&P's exclusive IAQ sensor detects both Volatile Organic Compounds (VOCs) and humidity when installed with a PC fan. The PCIAQS is a Plug-&-Play module, so it can be installed in several different PC fans. The PCIAQS is compatible with the PC80X, PC110X, and PC150. It is also compatible with the Standard Grille, the Metal Grille (PCMG), and the Lighted Grille Kits (PCLK and PCLEDK).

- Easy Plug-&-Play design
- Detects VOCs and/or rapid rise in humidity
- Semiconductor gas sensor, detecting a wide range of VOCs
- Monitoring range is 400-2000 ppm equivalent CO<sub>2</sub>
- Senses humidity at ceiling level
- Field adjustable humidity sensitivity with 50-100% range. Factory setting is 75%
- Continuous speed control to run fan continuously
- Integrated control switch to turn features on and off
- Can be installed with new fan or as an add-on later
- Meets CALGreen Bathroom Fan Requirement



### Bluetooth Speaker Module (PCBTS)

Add the PCBTS to turn our popular PC fan into your personal audio system!

- High Quality Bluetooth® wireless speaker.
- Plug-&-Play with PC standard size AC motor fans
- Easy pairing with most Bluetooth® enabled devices
- After initial pairing, connection to device is automatic
- 30 foot Bluetooth® range
- 5-year warranty

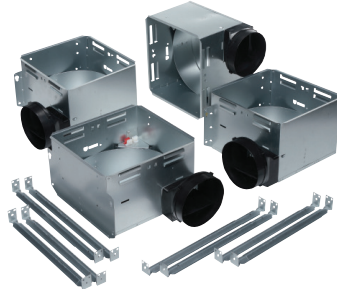




## PC CONTRACTOR PACKS

For simple installation, PC80X and PC110X are available as 4 packs with the fan housings ready for installation first, then after the drywall and painting are complete the motor and grilles are available to finish the job. The housing kit includes the housing and hanger bars, while the finish kit includes the motor plate, motor, wheel and grille.

Contractor packs can be ordered with the PCLK Lighted Kits to make a lighted fan pack or PCMK Motion Sensing Kits to make a motion sensing fan pack (order 4 grille packs with the Motor & Grille pack).



Housing Pack



Motor & Grille Pack

Pack Part #	Description
PCH	PC80X & PC110X Contractor Pack Housings (4 pk)
PC80F	PC80X Contractor Pack Motor and Grille (4 pack)
PC110F	PC110X Contractor Pack Motor and Grille (4 pk)

## ADDITIONAL PC ACCESSORIES

### 3-Switch Controls (PC3S)

The PC3S allows you to control three (3) features of a PC fan with one switch. Designed for PC fans with Grille Option and Plug & Play Control.



### Additional Accessory CHOICES

4" duct collar: PCDC4

6" duct collar: PCDC6

Metal Grille: PCMG

### Radiation Dampers

PCRD Includes:

- For use in 1, 2 and 3-hour rated floor-ceiling and roof-ceiling constructions
- ETL Listed (UL555C standard)
- Ceramic fiber with fiberglass cover
- Roll-formed frame 22 ga. galvanized steel

PCMKRD, PCLMKRD, PCLKRD, PCLEDKRD, PCMHKRD, PCLMHKRD

Kits Include same as PCRD plus:

- Grille Kit (as indicated)
- Wiring Extender

