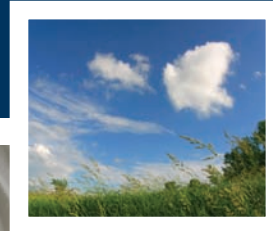
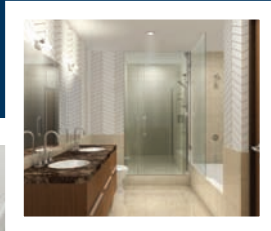




# Continuous Ventilation Controls

For Improved Indoor Air Quality



The World's Leading Producer of Air Movement Products

Efficient, cost effective way to achieve  
ASHRAE 62.2 continuous ventilation standard

# Continuous Ventilation Controls

S&P's CVC allow a new or existing bath fan to run continuously on a low speed. In conjunction with an S&P TD fan a CVC will immediately improve the air quality in the home and reduce the damaging effects of moisture and mold.

Soler & Palau's Continuous Ventilation Controls (CVC) are designed to meet the requirements of ASHRAE 62.2 and the International Residential Code. In areas where ASHRAE 62.2 is not a requirement the CVC is still an economical choice to improve indoor air quality.

CVC Model	Fan Model*	Application	Max. Flow	Continuous Flow @ .25"SP
CVC-100	TD-100	Single Inlet	101 CFM	20 CFM
CVC-100x	TD-100x	Single Inlet	135 CFM	20 CFM
CVC-150	TD-150	Single Inlet	218 CFM	20 CFM
		Dual Inlet	293 CFM	40 CFM

## Features

- Reduces remodeling costs, helps meet ASHRAE 62.2 requirements
- Perfect for homes, apartments, dorms, hotels and elderly housing
- Economical and easy to install in your existing wall box
- CVC works with most fan controls, i.e. motion sensors, timers, speed controllers.
- Improves the indoor air quality in your home
- Undetectable, efficient and effective
- Operates with any standard switch
- No programming required
- 120V, 60 Hz, 3A Maximum



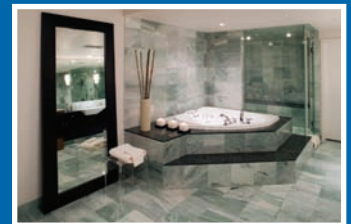
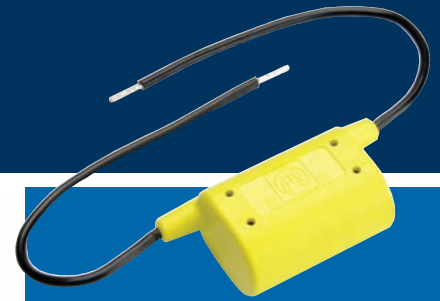
**CVC-100**  
(with TD-100)



**CVC-100x**  
(with TD-100x)



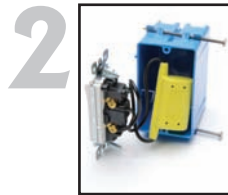
**CVC-150**  
(with TD-150)



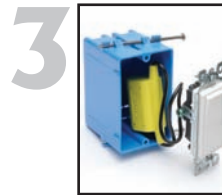
## Easy Installation. . .



S&P's CVC attaches to any standard wall switch.

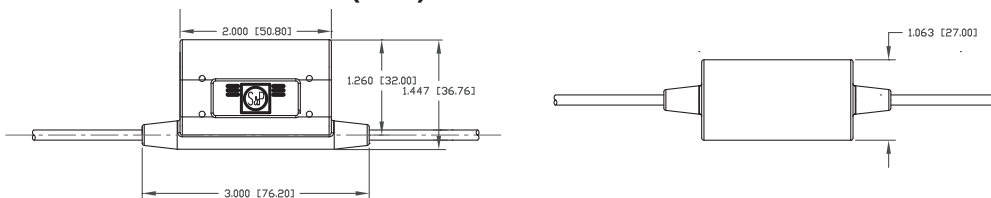


S&P's CVC is a simple 2 wire connection across the wall switch and fits into most standard wall/junction boxes.



S&P's CVC is completely installed in minutes!

## Dimensions in Inches (mm)



\*TD fans shown with CVC are part of a complete line of fans that range from 4" to 16" and have airflow capability from 100 cfm to over 3,000 cfm.



Soler & Palau USA  
6393 Powers Avenue  
Jacksonville, FL 32217  
800.961.7370  
800.961.7379  
www.solerpalau-usa.com

Soler & Palau Canada  
61 A Baywood Road  
Toronto, ON M9V 3Y8  
866.733.0233  
866.358.5346  
www.solerpalaucanada.com

Distributed By:

