



# CREWCOOLER™

## AISLE AIR CIRCULATOR FAN



The CrewCooler aisle air circulator fan is designed to move large volumes of air at low fan speeds and noise levels. This high-capacity belt-driven propeller fan features easy mounting for economical installation, and can be suspended from the ceiling to direct large volumes of downward airflow toward workers in the aisles. Applications include distribution centers, warehouses, manufacturing, poultry houses, and greenhouses.



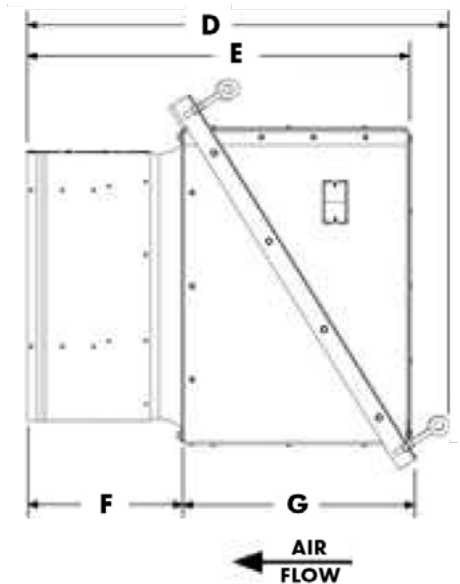
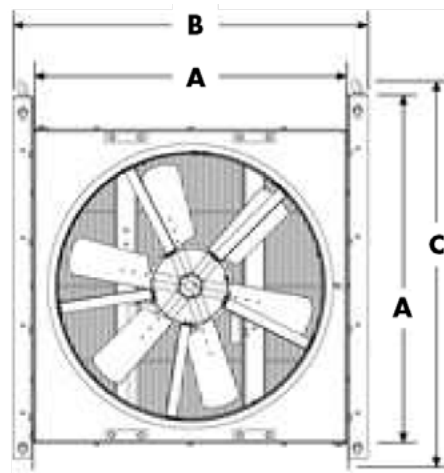
### SPECIFICATIONS

#### Standard Features:

- AMCA Air, Sound, and FEI Licensed
- Statically and dynamically balanced propeller
- Drives sized for a minimum of 150% of drive horsepower
- Galvanized steel one-piece fan panel and orifice
- All-welded galvanized motor and drive support assembly
- Die-formed galvanized steel blades
- Heavy gauge welded hub keyed to fan shaft
- Air handling bearings L50=200K hours average life
- Warranty: 2-year fan, 1-year motor

### DIMENSIONS

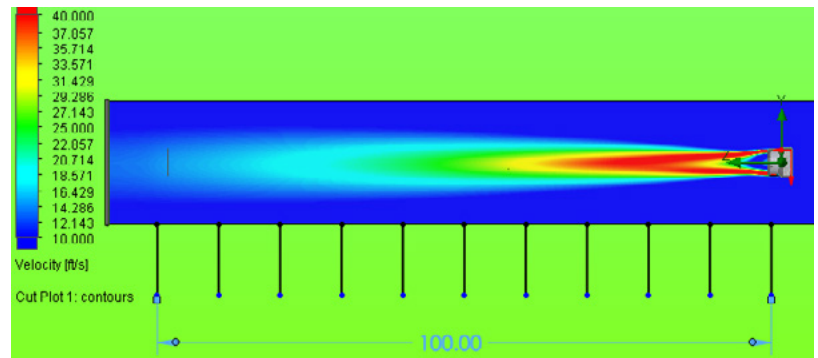
SIZE	A	B	C	D	E	F	G
24	30	34	37	39	37	15	22
48	54	58	64	48	45	26	19



### FAN PERFORMANCE

SIZE	MAX HP	CFM RANGE	MAX SP	AVG. SHIP WEIGHT (LBS)
24	1-1/2	2,256-9,774	5/8"	90
48	1-1/2	6,659-28,209	3/8"	125

### AIR THROW CHART



### CAN BE USED TO COMPLY WITH

ASHRAE  
STANDARD 62.1

ASHRAE  
STANDARD 62.2

ASHRAE  
STANDARD 90.1

IMC  
2021

IRC  
2021

IECC  
2021

