



MODEL PV-DEDPV

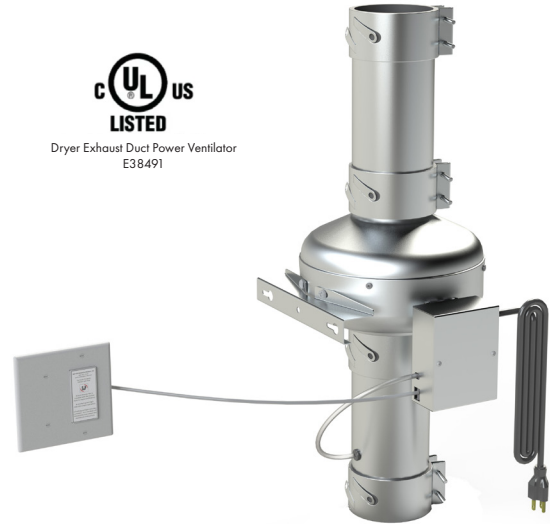
Dryer Exhaust Duct Power Ventilator

FEATURES

- cULus 705 safety listed Dryer Exhaust Duct Power Ventilator for use with Gas or Electric clothes dryers
- Complies with IRC and IMC codes
- Automatic operation with integral pressure sensor
- 6' power cord
- LED indicator light panel for operation status
- Quick connect duct clamps and duct sections for easy maintenance
- Backward inclined centrifugal impeller for high static pressure capability
- Extend dryer duct length up to 120 feet
- High temperature thermal fuse for safety
- Class F insulation
- IP44 Motor protection

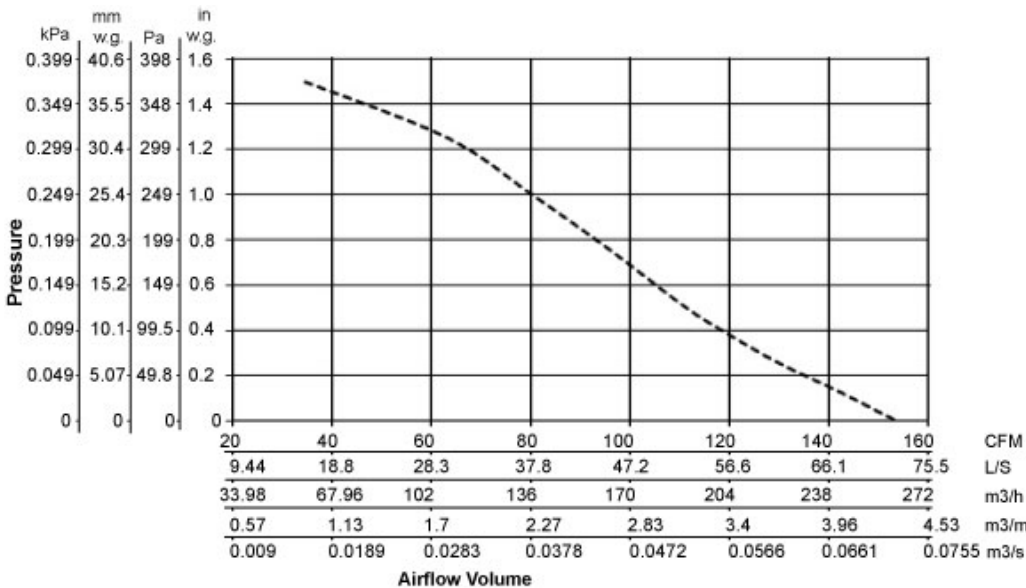


Dryer Exhaust Duct Power Ventilator
E38491



AMCA PERFORMANCE

Duct (in)	Airflow (CFM) @ Static Pressure (in w.g.)									Frequency (Hz)	Voltage (V)	Maximum motor input power (W)	Max Current (Amps)	Nominal Speed (RPM)
	0	0.125	0.25	0.375	0.50	0.75	1.0	1.25	1.50					
4	153	142	130	120	111	96	80	63	34	60	120	84	0.7	2880



Performance certified is for installation type D-Ducted inlet, Ducted outlet. Performance ratings do not include the effects of appurtenances (accessories). Speed (RPM or RPS) shown is nominal. Performance is based on actual speed of test. S&P USA Ventilation Systems, LLC., Div. of Soler & Palau Ventilation Group, certifies that the PV range shown herein is licensed to bear the AMCA Seal. The ratings shown are based on tests and procedures performed in accordance with AMCA Publication 211 and comply with the requirements of the AMCA Certified Ratings Program.

HVI PERFORMANCE

Duct (in)	Airflow (CFM) @ Static Pressure (in w.g.)	Frequency (Hz)	Voltage (V)	Max Power (W)	Max Current (Amps)	Nominal Speed (RPM)
	0.20					
4	130	60	120	84	0.7	2880



* Based on as-tested values

DIMENSIONS (INCHES)

