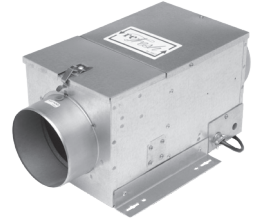




ReFresh RF8-120AC Submittal



RF8-120AC

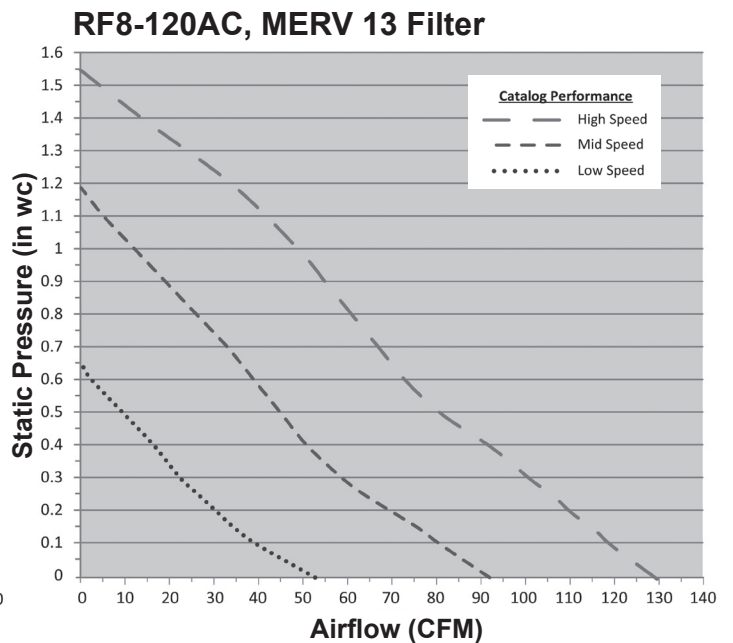
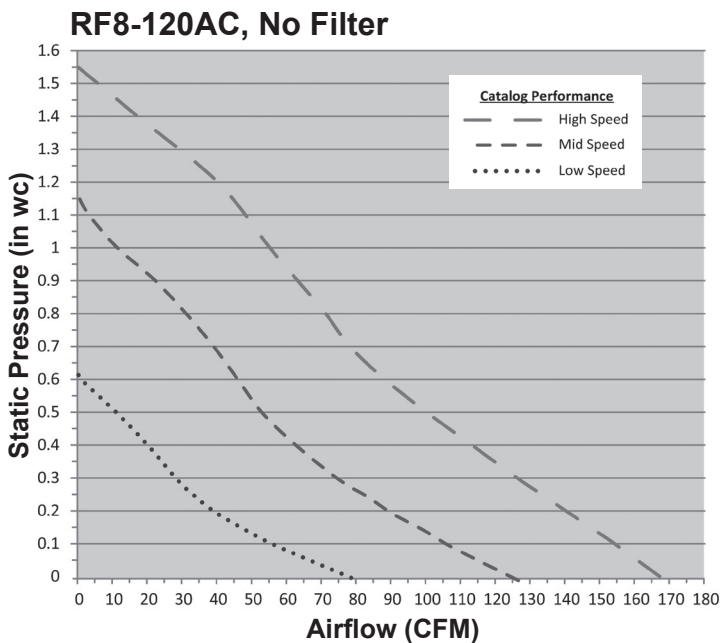


Specifications

- Low profile, galvanized, 26 ga., insulated housing
- 6" round duct connectors
- Test port for easy air flow measurement
- 2" wide filter slot for optional 8 x 8 x 2" filters
- Integral mounting tabs allow mounting in any orientation
- Backward inclined wheel
- Speed controllable, AC motor, 120V, 60 Hz
- 4 pole, permanently lubricated, thermally protected motor
- Internally mounted speed control to set required intake with high, medium, and low set points
- 6' power cord
- HVI Certified performance with and without optional MERV13 Filters
- cULus 507 Listed

Options and Accessories

- 8 x 8 x 2" MERV8 or MERV13 filters
- Steel backdraft dampers
- Motorized backdraft damper
- Duct heater





ReFresh RF8-120AC

Submittal

HVI Certified Performance

Model	Speed Setting	Speed (RPM)	CFM @ Static Pressure (inches w.g.)								Amps @ .2" SP	Watts @ .2" SP	Efficacy (CFM/Watts) @ .2" SP
			0	.1	.15	.2	.25	.3	.4	.5			
RF8-120AC	LS	1480	79	57	48	40	34	29	21	-	0.48	37.3	1.2
	MS	2040	126	107	99	90	83	75	63	53	0.57	55.9	1.6
	HS	2500	167	154	147	140	133	126	113	100	0.63	74.1	1.9
RF8-120AC (With <i>MERV 13</i> Filter)	LS	1510	52	39	34	30	26	22	16	-	0.48	37.4	1.0
	MS	2090	92	81	76	70	64	59	51	45	0.58	56.3	1.4
	HS	2530	129	119	115	110	106	101	92	81	0.63	73.3	1.6

Speed is Nominal.

Dimensions (in)

