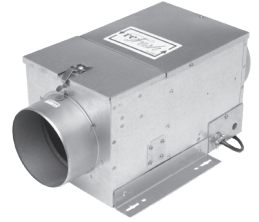




RF8-120EC

ReFresh RF8-120EC Submittal



EcoWatt®



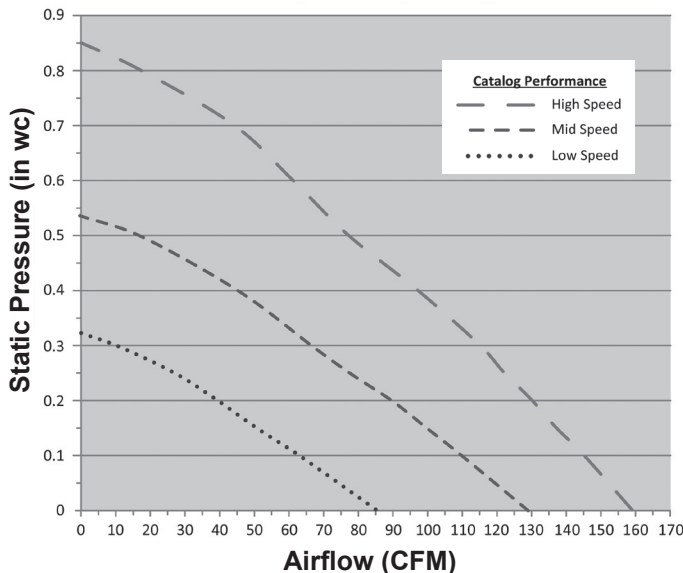
Specifications

- Low profile, galvanized, 26 ga., insulated housing
- 6" round duct connectors
- Test port for easy air flow measurement
- 2" wide filter slot for optional 8 x 8 x 2" filters
- Integral mounting tabs allow mounting in any orientation
- Backward inclined wheel
- Speed controllable, EC motor, 120V, 60 Hz
- 4 pole, permanently lubricated, thermally protected motor
- Internally mounted speed control to set required intake with high, medium, and low set points
- 6' power cord
- ENERGY STAR® qualified
- HVI Certified performance with and without optional MERV13 Filters
- cULus 507 Listed

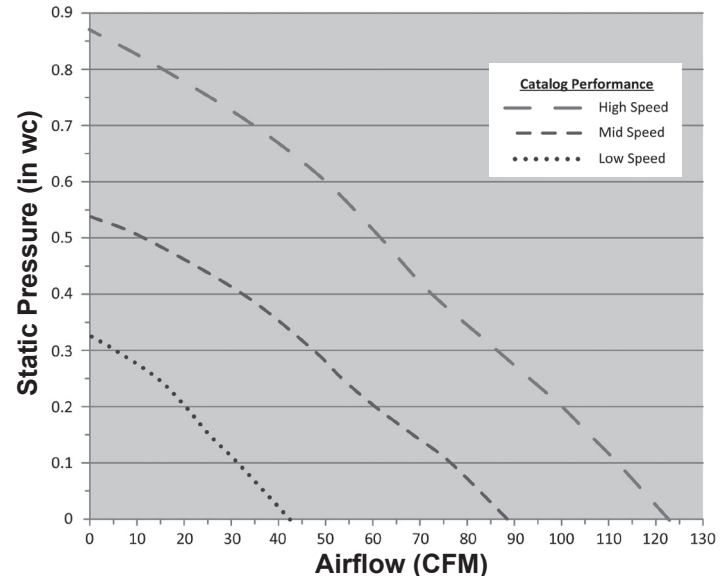
Options and Accessories

- 8 x 8 x 2" MERV8 or MERV13 filters
- ES24V – Envirosense Ventilation Control (loose)
- Steel backdraft dampers
- Motorized backdraft damper
- Duct heater

RF8-120EC, No Filter



RF8-120EC, MERV 13 Filter





ReFresh RF8-120EC

Submittal

HVI Certified Performance

Model	Speed Setting	Speed (RPM)	CFM @ Static Pressure (inches w.g.)								Amps @ .2" SP	Watts @ .2" SP	Efficacy (CFM/Watts) @ .2" SP
			0	.1	.15	.2	.25	.3	.4	.5			
RF8-120EC	LS	1300	85	63	51	40	28	-	-	-	0.13	7.2	6.6
	MS	1670	129	110	100	90	78	67	46	-	0.25	14.4	6.3
	HS	2100	159	145	137	130	122	115	97	77	0.45	27.6	4.9
RF8-120EC (With <i>MERV 13</i> Filter)	LS	1300	42	31	25	20	14	-	-	-	0.12	6.9	5.3
	MS	1670	88	76	68	60	53	47	32	-	0.23	13.9	5.0
	HS	2100	123	112	106	100	93	86	72	61	0.44	26.7	4.0

Speed is Nominal.

Dimensions (in)

